



Year 6

Holy Cross

Mrs King
Miss Vickers



This session will be about:

- ▶ SATs dates
- ▶ Maths
- ▶ English
- ▶ Homework
- ▶ Attendance
- ▶ Reading
- ▶ Any questions



SATs



Monday 12th May 2025

Grammar, Punctuation and Spelling –
Paper 1
Grammar, Punctuation and Spelling –
Paper 2

Tuesday 13th May 2025

English Reading

Wednesday 14th May 2025

Maths Paper 1 (Arithmetic)
Maths Paper 2 (Reasoning)

Thursday 15th May 2025

Maths Paper 3 (Reasoning)

On the morning of the SATs tests, children to arrive at 8am for breakfast (provided free of charge).

Maths SATs





Maths

▶ Tests:

- ▶ Arithmetic – 40 marks (30 minutes)
- ▶ Reasoning 1 – 35 marks (40 minutes)
- ▶ Reasoning 2 – 35 marks (40 minutes)

*extra time of an extra 25% is sometimes available where children qualify for it.

Numeracy – what you need to do

Know your times tables.

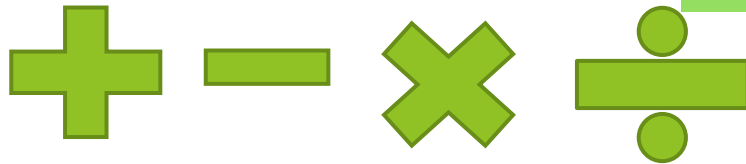
Do your homework.

Practise mental methods.

Practise written methods.

Practise fractions and percentages.

$$\begin{array}{r}
 15 \overline{) 288.0} \\
 \underline{30} \\
 132 \\
 \underline{120} \\
 120 \\
 \underline{120} \\
 0
 \end{array}$$



Paper 1 - Arithmetic



25 $37.8 - 14.671 =$

1 mark

26 $\frac{1}{4} + \frac{1}{5} + \frac{1}{10} =$

1 mark

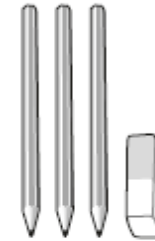
Papers 2 and 3 - Reasoning

9

6 pencils cost **£1.68**



3 pencils and 1 rubber cost **£1.09**



What is the cost of **1 rubber**?

Show your method

2 marks

Reading
and
Spelling, Punctuation and
Grammar SATs



English

- ▶ Reading – 50 marks (60 minutes)
- ▶ Spelling – 20 marks (15-20 minutes)
- ▶ Grammar and Punctuation – 50 marks (45 minutes)

- ▶ Writing is assessed through pieces produced by the child throughout the year.



Advice for completing your SATs reading paper:

- read the text quickly, look at everything on the page (dates, labels under photos etc.);
- read the questions very carefully;
- for 3 mark questions, P.E.E. (Point, Evidence, Explain);
- your answers; maximum time you should spend on each text is 20 minutes.

Key stage 2



English grammar, punctuation and spelling test mark schemes

Paper 1: questions
and Paper 2: spelling

1

Draw a line to match each word to the correct **suffix** to make an **adjective**.

Word

manage

harm

self

Suffix

ish

able

ful

1 mark



2016 national curriculum tests

Key stage 2

**English grammar,
punctuation and spelling**

Paper 2: spelling

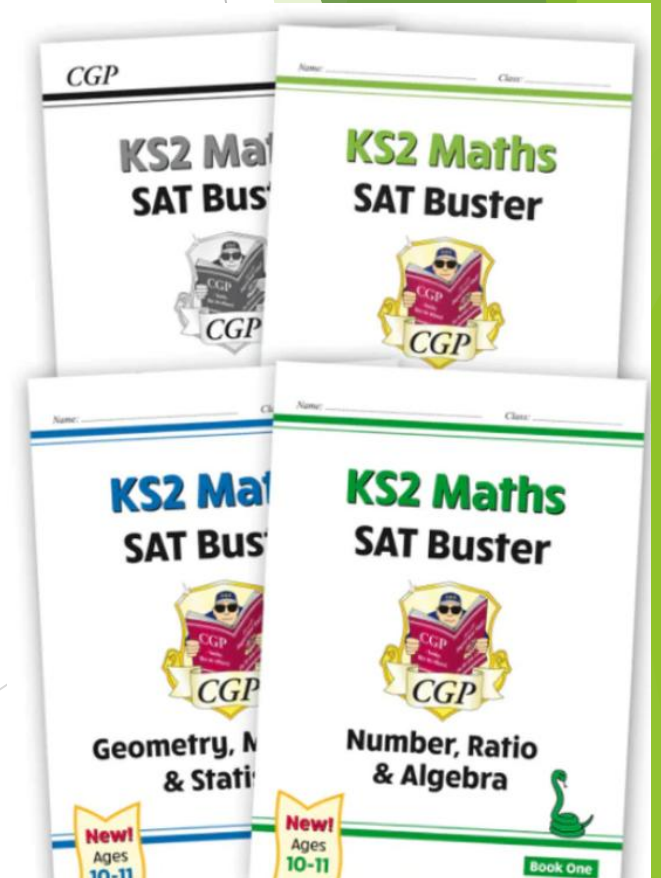
Spelling task

1. Jordan's messy room was in a state of _____.
2. David gave a _____ on the door before entering.
3. Anita was _____ her shoes.

Documents for support in SATs preparation:

- ▶ Spelling rules;
- ▶ Written mathematical methods sheet;
- ▶ QR codes to buy practise books from Amazon;
- ▶ <https://www.holycross.swindon.sch.uk/>

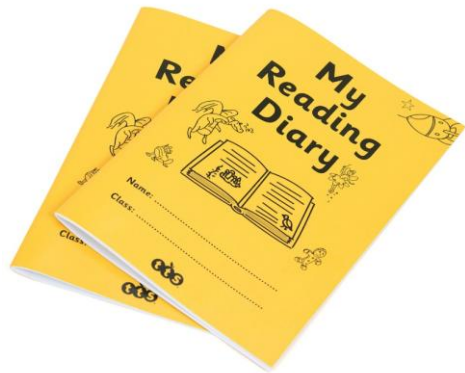
- ▶ Speak with teachers - our doors are always open!



HOMEWORK

Week 16 – Words with endings /shuhl/ after a consonant letter

Look/Say	Write / Check	Write / Check	Write / Check	Write / Check	Write / Check
influential					
martial					
spatial					
partial					
confidential					
essential					
substantial					
potential					
sequential					
torrential					



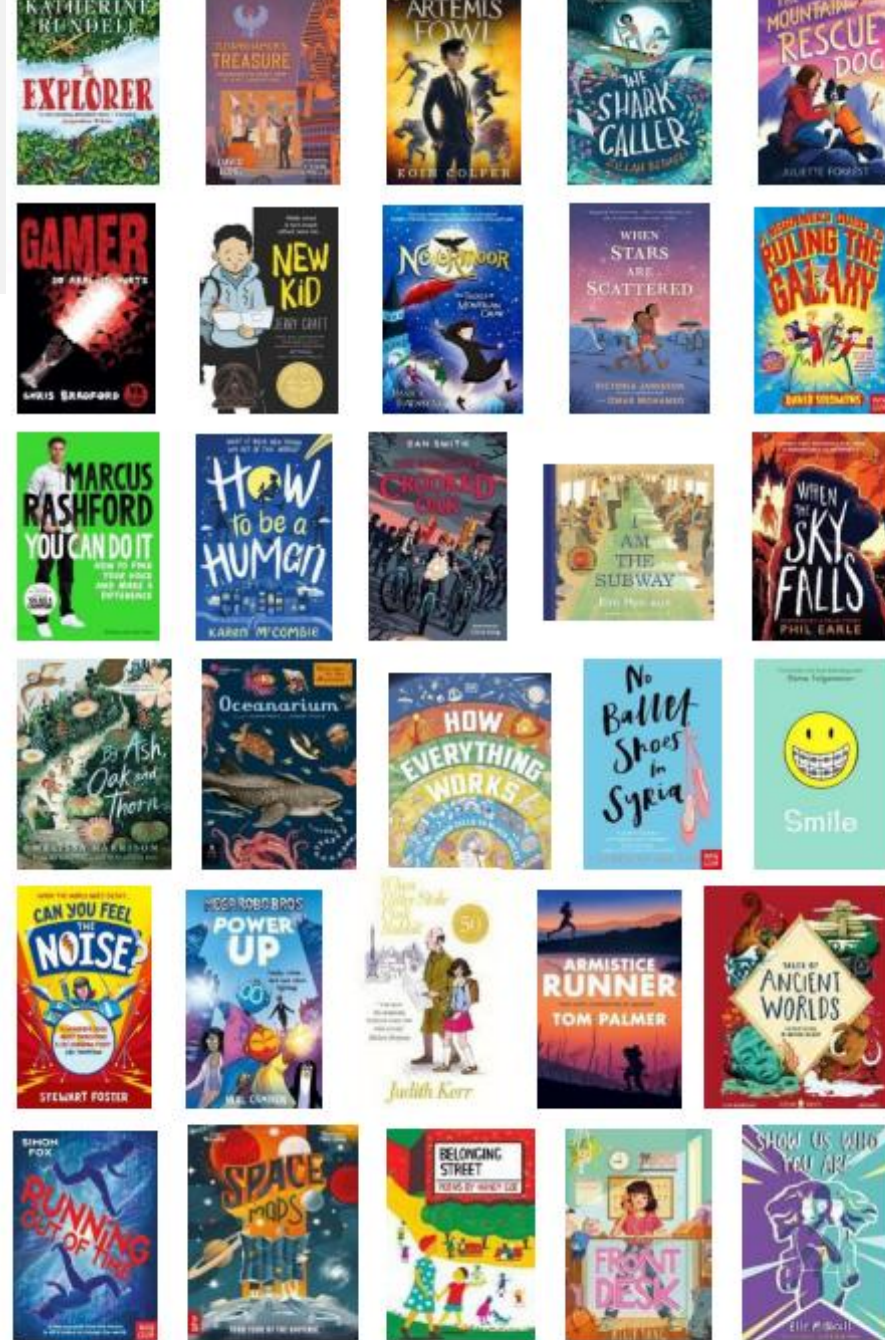
Attendance



Reading in Year 6



▶ A reading book is selected or recommended by a teacher which is to be taken home and brought back everyday with the reading record.



Paper	Date to bring back to school
Reading paper	Monday 24 th February
Grammar paper Arithmetic paper 1	Thursday 27 th February
Reasoning paper 2	Monday 3 rd March
Reasoning paper 3	Tuesday 4 th March

Any questions?